

# COLLEEN TOTE BAG ADD-ONS

*Flap with Turn Lock and Purse Feet*



**MAKE YOUR EVERYDAY TOTE EXTRA SPECIAL**

Digital Sewing Pattern for Beginners

[www.iloveyousew.com](http://www.iloveyousew.com)

Designed by: Cristy Stuhldreher

Love You Sew LLC Copyright 2019 - All Rights Reserved



The Colleen Tote Bag is a great starter sewing pattern as a new bag-maker. It provides a solid design foundation with plenty of room for customization. With these add-ons, you will learn how to install a Turn Lock on the Flap and install Purse Feet on the bottom of the bag. With the right hardware, these details can really give your bag a more polished look and take your bag-making up to the next level!

## COPYRIGHT AND LICENSING INFORMATION:

This pattern is for individual use only. You may sell your handmade bags in small quantities and Love You Sew must be credited for the bag design. This pattern is not for mass production. You may NOT redistribute this pattern in any way and/or claim it as your own.

## IMPORTANT NOTES:

You will need the original Colleen Tote pattern to reference along with these add-on instructions.

Please read all instructions **BEFORE** starting your project.  
Back-stitch at the beginning and end of every seam.

**1/4" Seam Allowance unless noted.**

### Acronyms:

- RS - Right Side of fabric
- WS - Wrong Side of fabric
- RST - Right Sides of fabric together
- WST - Wrong Sides of fabric together

## MATERIALS REQUIRED:

- Main or Accent Fabric
- Fusible Fleece and Woven Interfacing (optional)
- (1) Turn-Lock
- (4) Purse Feet

## ADDITIONAL NOTIONS:

- Cutting Mat
- Matching Thread
- Scissors
- Ruler
- Pins

## TEMPLATE PRINTING:

- Print page 7 at 100% or at "Actual Size." Un-check any options to "Shrink to Fit" or "Scale to Fit."
- The template page includes a 1" Test Block. Measure for accurately sized pattern templates.



## INSTALL PURSE FEET:

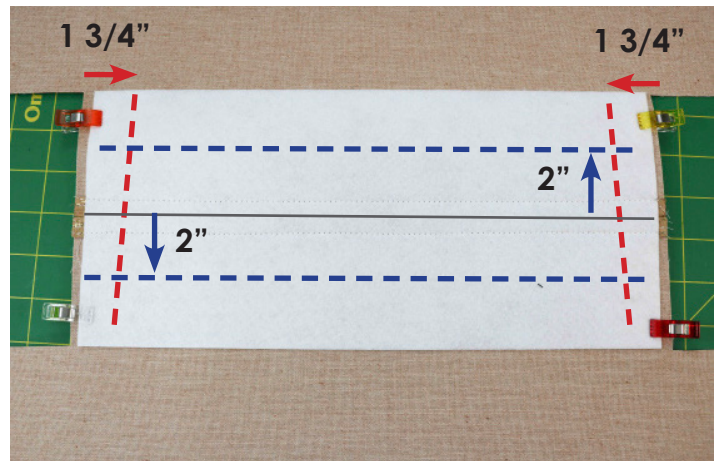
After step #46 of the original instructions:

46a. With the ultra-firm stabilizer in place with the wrong side facing up, measure in 1 3/4" from each cut-out side and 2" away from the Bottom's center seam. This will give you (4) intersecting points.

46b. With the intersections as the center, follow the manufacturer's instructions to install the Purse Feet.

*TIP: Run the prongs parallel to the center seam to ensure they are protected with the ultra-firm stabilizer*

Return back to step #47 of the original instructions.



3

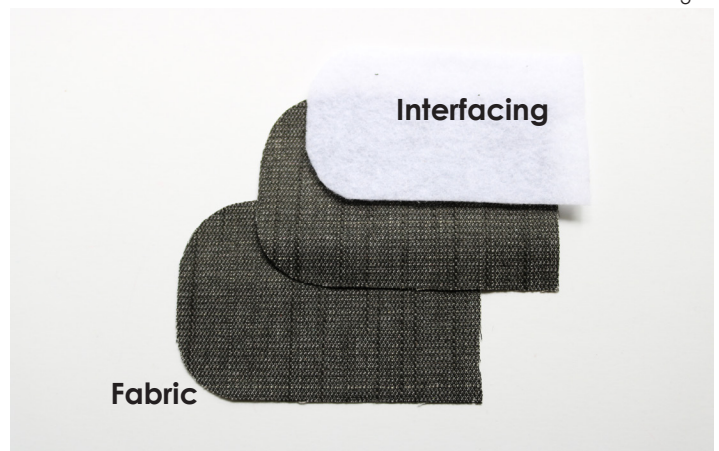
## FLAP CONSTRUCTION:

After step #59 of the original instructions:

59a. Use pattern templates to cut interfacing, flap pieces and to transfer markings.

**Please note**, woven interfacing is only if you are using quilt cotton or lightweight fabric. You want the fabric to be strong enough to hold the turn lock and for daily wear and tear, but you don't want it to be so heavy and stiff that it doesn't bend over the bag.

59b. Fuse interfacing following manufacturer's instructions to the WS of Flap(s) centered and aligned along the straight edge.



59c. Place both Flaps RST and sew around the curved side.



59d. Cut notches into the seam allowance around the curve without cutting through the thread.

*TIP: Use pinking shears to speed up the notching process.*



59e. Turn the Flap RS out, gently pushing out the edges. Press.

*TIP: Use a turn tool to help push out the edges.*



59f. Top-stitch 1/8" around the curved edge of the Flap.



59g. Double-check the Turn Lock markings on the **top** of the Flap. It should be centered and 3/4" from the finished short end.

Install the female half of the lock per the manufacturer's instructions.



59h. With RST, lay the Flap on an External Panel centered between the handles with raw edges aligned. Baste 1/8" into place.



59i. With the other Exterior Panel RS facing up, find the center and measure 1 3/8" down from the top edge of the bag.



59j. Install the male part of the Turn Lock per manufacturer's instructions using the marking as the center point.

Return back to step #60 of the original instructions to finish the bag!





**THANK YOU FOR MAKING A LOVE YOU SEW PATTERN!**

Hardware featured is from Emmaline Bags. [www.emmalinebags.com](http://www.emmalinebags.com)

Please share your gorgeous new accessory with **#colleentotebag** and **#loveyousewpatterns** on social media. Don't forget to tag **@loveyousew\_** on Instagram so I can see those gorgeous makes!

If you have any questions, feel free to email me at [cristy@loveyousew.com](mailto:cristy@loveyousew.com) or visit [www.loveyousew.com](http://www.loveyousew.com) for hacks and blog posts related to the Colleen Tote Bag.

